

Manor West Leisure Club Membership Rates .

Membership Category	3 Months Full	6 Months Full	12 Months	
			Full	Off Peak
Single Adult	€190	€350	€560	N/A
Couple**	€300	€560	€920	N/A
Senior 60+	€160	€210	€350	€270
Student (MTU / KCFE) ID Required	€160	N/A	N/A	

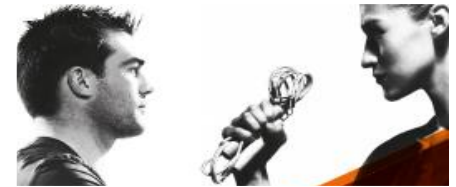
****Terms & Conditions of Leisure Club specify category as (2 people in a relationship, not 2 friends or siblings)**

Full Peak Membership: Monday to Friday: 6.45am – 9.30pm
Saturday to Sunday: 8am – 8pm (& Bank Holidays)

Off Peak Membership: Monday to Friday: 8:30am – 4:30pm
Saturday to Sunday: 8am – 8pm Anytime (& Bank Holidays)



CLASSES



Family* Membership Rates

Membership Category	3 Months Full	6 Month Full	12 Month Full
1Adult 1Child	€270	€420	€660
1Adult 2Children	€290	€470	€820
2Adults 1Child	€375	€615	€995
2Adults 2Children	€395	€635	€1015
2Adults 3Children***	€410	€650	€1030

***Terms & Conditions of Leisure Club specify category as Family (adult parents of Child/Children)**

*****Rate will remain same for more than 3 children**

Children's Hours are restricted: Monday to Sunday: 8am – 7pm
Under 3's go FREE